

# Visual Report

*by* Df S

---

**Submission date:** 27-Feb-2020 12:58AM (UTC+0300)

**Submission ID:** 1264823091

**File name:** VISUAL\_REPORT\_WITH\_3\_DATA\_VISUALIZATIONS.edited.docx (27.46K)

**Word count:** 615

**Character count:** 3127

VISUAL REPORT WITH 3 DATA VISUALIZATIONS

(Student Name)

(Institution)

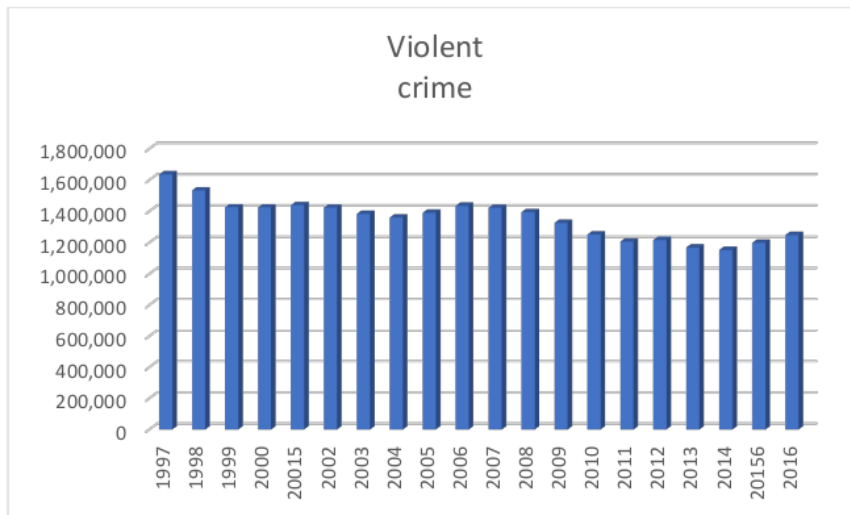
## Introduction

Crime in the United States has been on the decreasing trend from the 1990s to the recent 2000s. This period has been considered the longest as well as the highest decreasing crime trend timeframe since the end of World War II. The declining trend happened in both violent as well as non-violent crimes in all areas of the nation and among the main demographic sets (James, 2018). Some of the statistics in the country, according to the FBI, were that Property Crime happened almost every three seconds in the United States. Violent Crime was second and got reported on every twenty-two seconds. Opposite of what most individuals think, crimes associated with property remains the top-rated event when compared to violent crimes. In comparison, property crime was nearly ten times as compared to violent crimes in terms of prevalence. Some of the forms of violent crimes understudy in this Data include violent Crime, murder, and non-negligent manslaughter, rape, rape legacy, robbery, aggravated assault, among many more. Some that are associated with <sup>2</sup> property crime include burglary, Larceny theft and motor vehicle theft. The most important part of this report is that it provides three visual analyses of the crimes in the Data on crime rates in the United States, as discussed below.

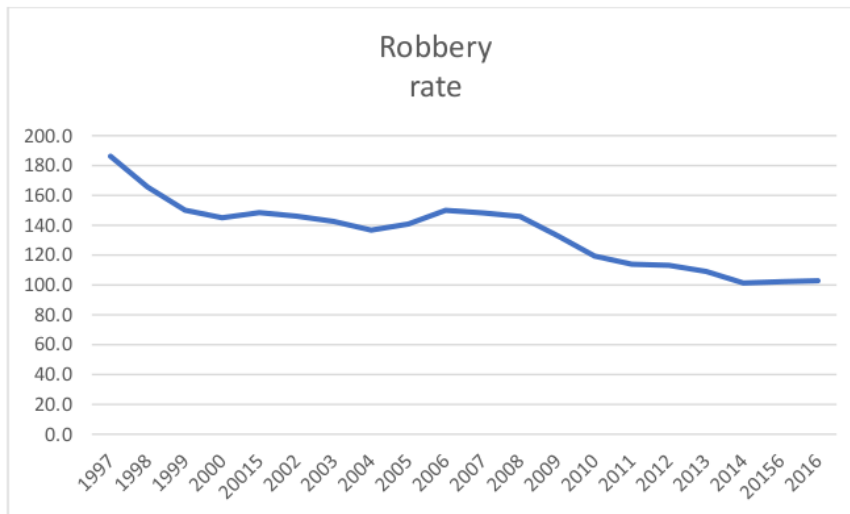
## Meaning of each visualization

The three visuals below are the bar graph, the line graph, and the scatter plot. The bar graph is used as the first visualization because they allow the reader to come up with patterns or trends through just having a look at the bars. The line graph shows the change of the Crime over time as a series of values that are connected using different sets of lines. Why is it important? The line graph shows the trend in the crime rate with Crime being dependent and time being the independent factor. These types of graph track change for mostly short and long periods

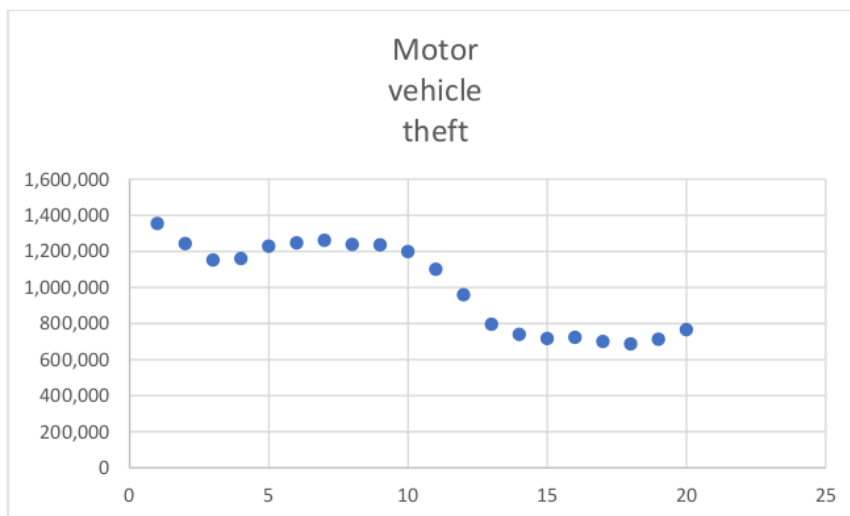
(BetterEvaluation, 2019). Lastly, the scatterplot comes closer to the line graph and shows the trend, as can be seen in the three visualizations below.



The above bar graph shows the rate of violent Crime from the year 1997 to 2016. The primary purpose of the chart is to analyze the trend in violent crimes over the period. From the graph, the rate began on a high note in 1997, decreased before increasing between 2005 and 2009. The trend later continued falling until 2014 before rising once more in 2015 and 2016.



The line graph shows that the robbery rate has seen a drop and a rise in different years. Robbery in the United States began on a very high end in 1997. The trend went down until 2004 before rising. Since then, the graph continues to lower, indicating that the rate of robbery in the United States has been declining annually.



The Scatter Plot of Motor Vehicle also shows a declining trend between the different years. The trend began at a very high rate, before declining, and the trend has been decreasing over the

years till 2016. Just like the other trends of violent crimes, Property crimes, precisely motor vehicle, has been on the decreasing end too.

Conclusions suggested from Data.

In conclusion, the trends in crimes, violence, and property have been reducing in number even after showing a rise between the years 2005 through 2008. The numbers are not like in 1997 when the events were numerous. What does this mean? The decline shows that the nation improved in security and curbed the crimes.

## References

BetterEvaluation. (2019). *Line Graph*. Retrieved from

<https://www.betterevaluation.org/en/evaluation-options/LineGraph>

James, N. (2018). *Recent Violent Crime Trends in the United States*. Retrieved from

<https://fas.org/sgp/crs/misc/R45236.pdf>

# Visual Report

---

## ORIGINALITY REPORT

---

**3%**

SIMILARITY INDEX

**3%**

INTERNET SOURCES

**2%**

PUBLICATIONS

**2%**

STUDENT PAPERS

---

## PRIMARY SOURCES

---

**1**

**diglib.eg.org**

Internet Source

**2%**

**2**

**www.ncheadlines.com**

Internet Source

**2%**

---

Exclude quotes      Off

Exclude matches      Off

Exclude bibliography      On